

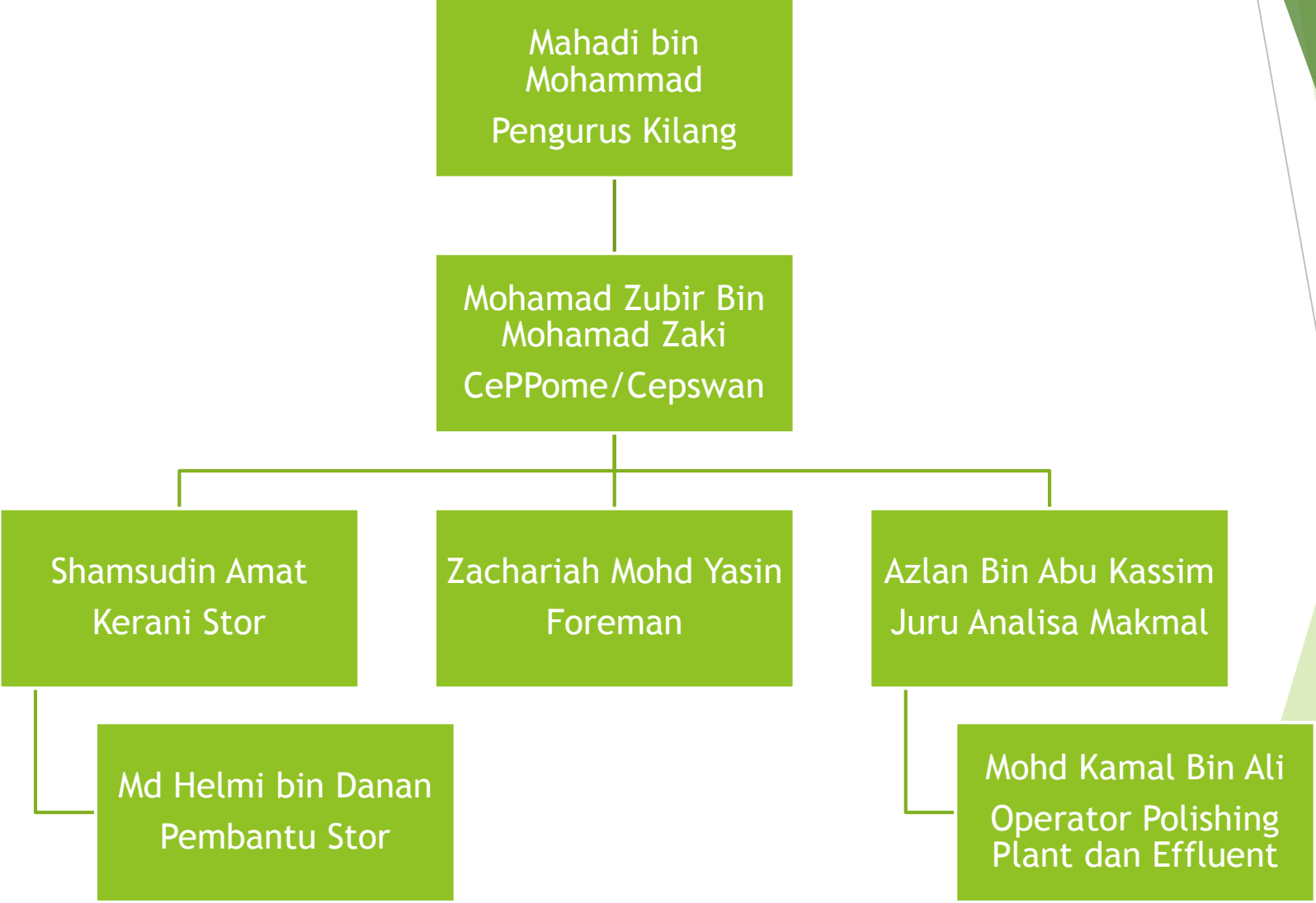




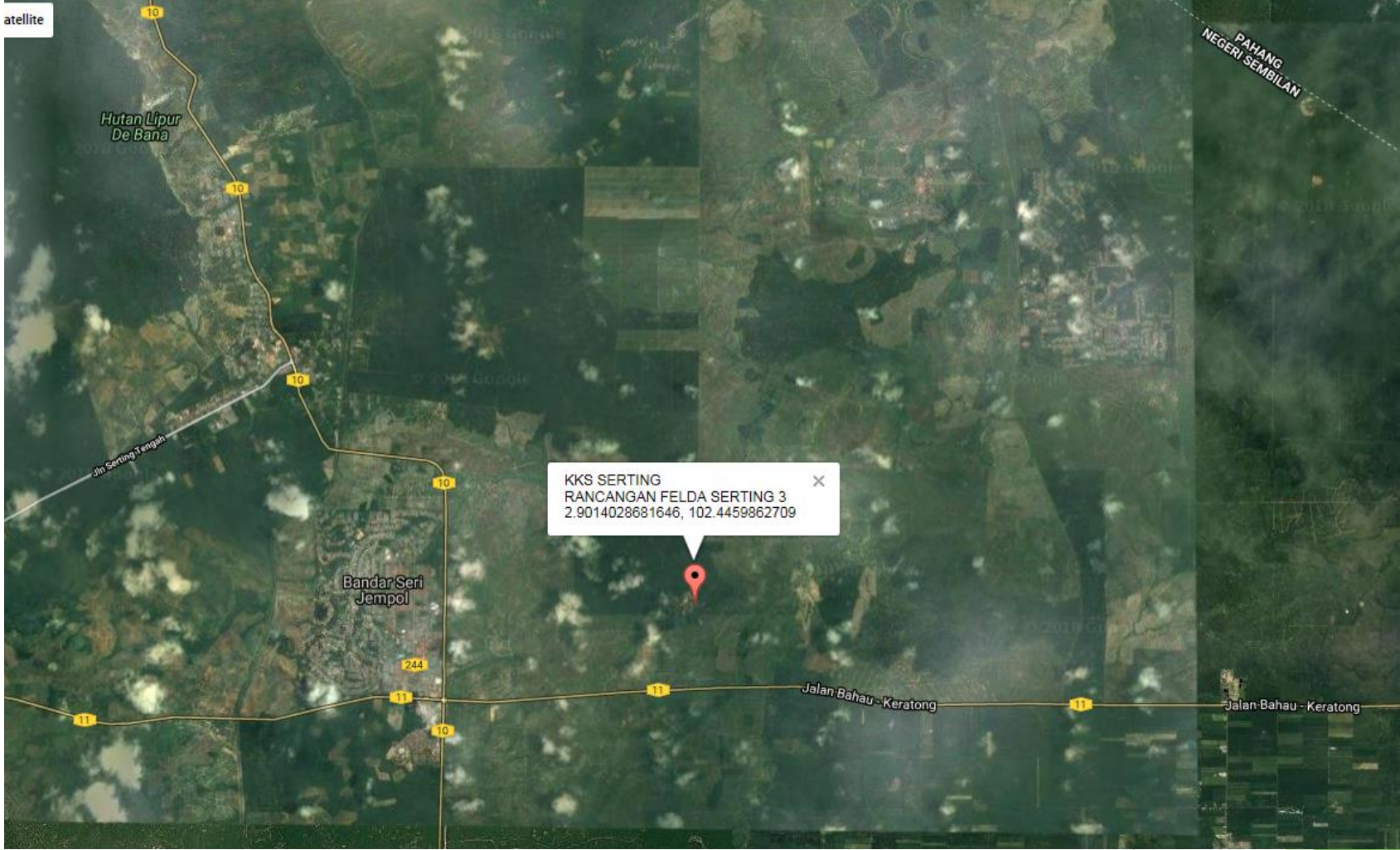
LATAR BELAKANG KILANG

Pemegang	Felda Global Ventures Berhad
Mula beroperasi	September 1983
Produk keluaran	Minyak sawit mentah & Isi Rong
Kapasiti maksimum pemprosesan (syarat lesen)	60 mt FFB /sejam
Kapasiti proses sebenar	54 - 56 mt/jam (800 - 900 mt/hari - 15-17 jam proses)
Purata kadar alir efluen mentah	Purata 570 - 640 m ³ /hari (1 mt FFB = 0.60 m ³ efluen)
Kadar alir efluen maksimum KB SPE	1010 m ³ /hari
Pelepasan efluen	Alur air

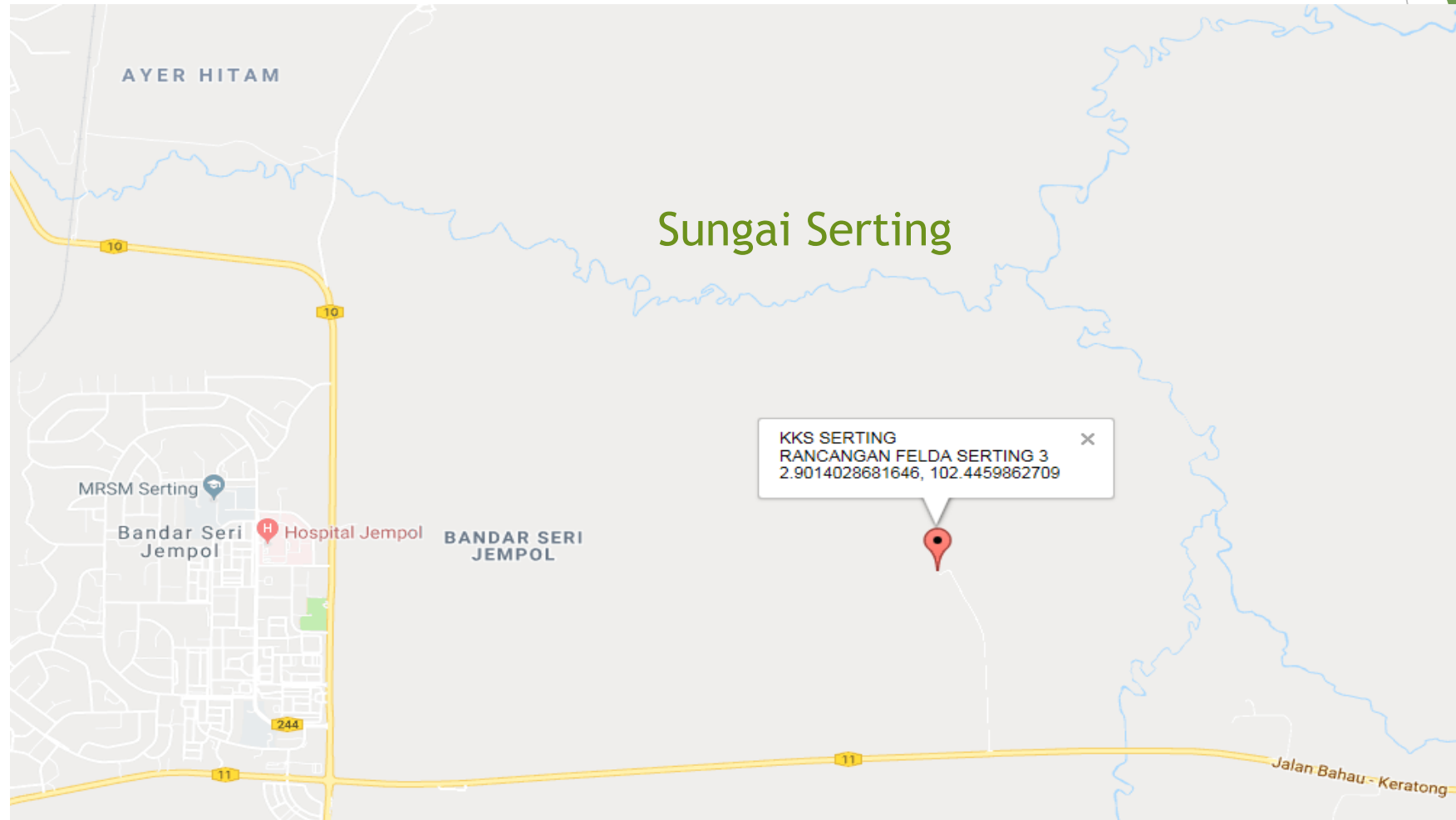
CARTA ORGANISASI KILANG SAWIT SERTING



LOKASI KILANG I



LOKASI KILANG & SUNGAI



PRODUK

PRODUCT FROM PALM FRUIT

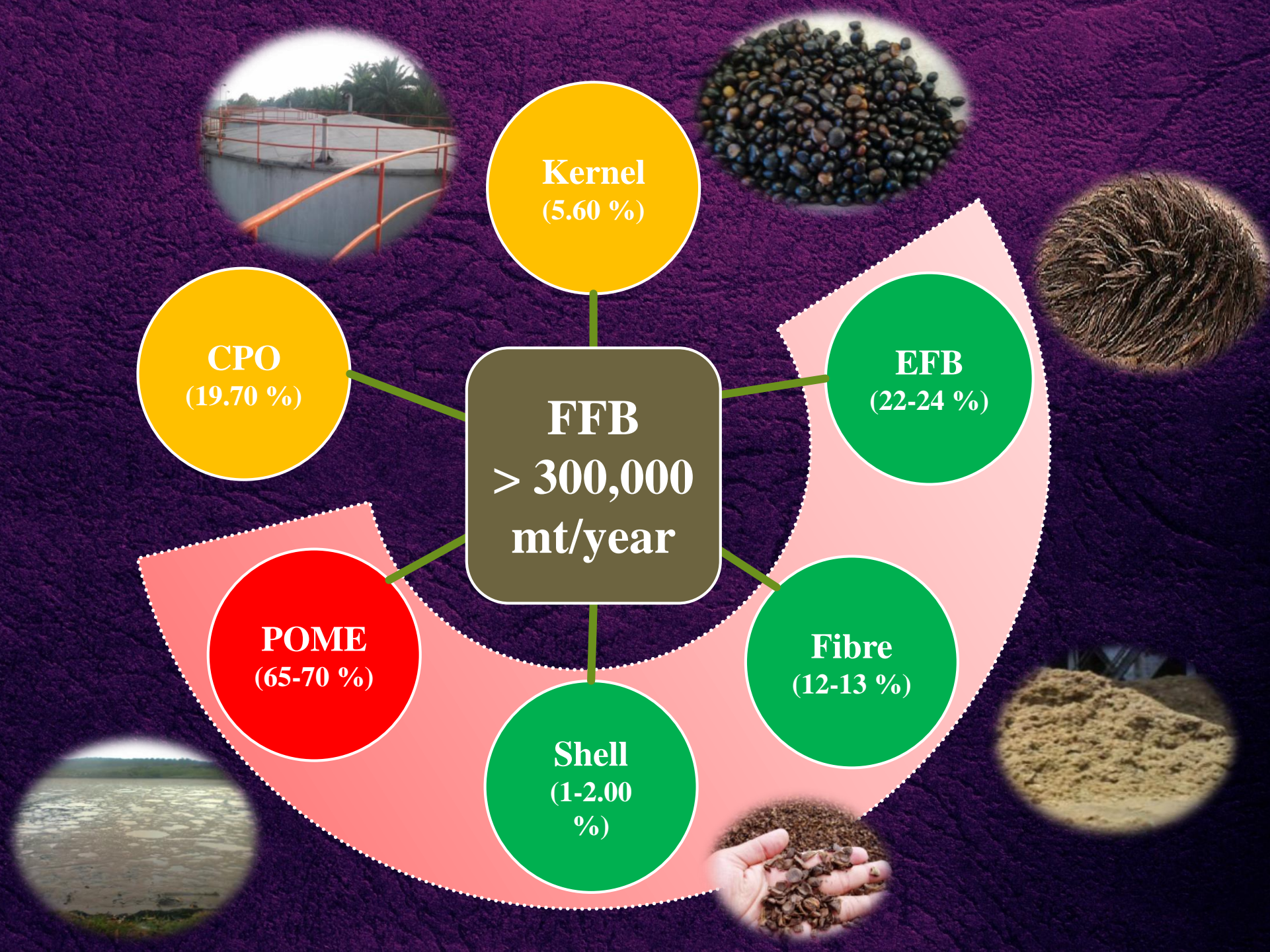


Crude Palm Oil



Kernel

PRODUCT QUALITY	
CPO	KERNEL
Dirt, max = 0.02	Dirt, max = 6.00
VM, max = 0.20	VM, max = 7.00
FFA, max = 5.00	FFA, max = 5.00
DOBI, min = 2.31	Oil, min = 45.00

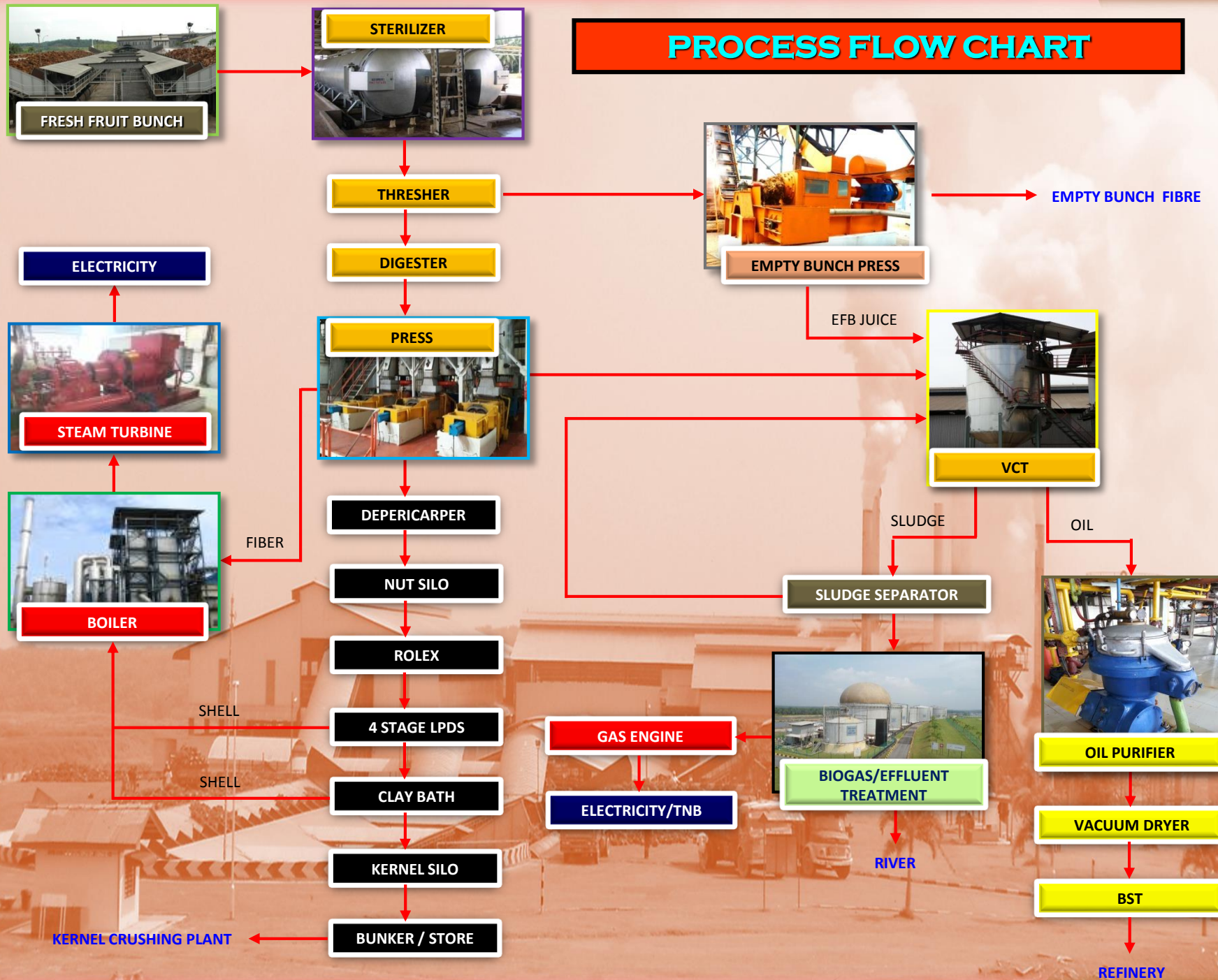


KAPASITI KILANG 2018

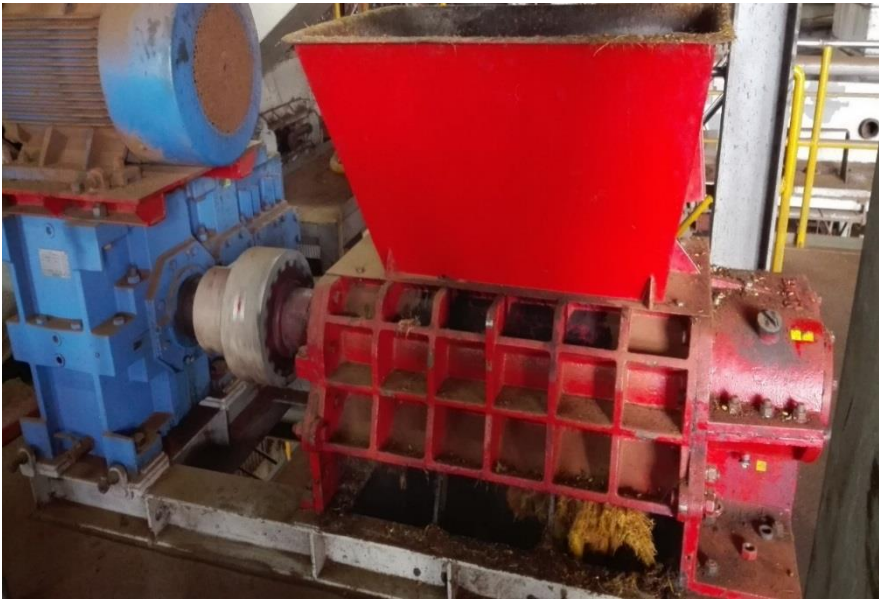
BULAN	PROSES (MT)	KAPASITI (60MT/JAM)
MAC	29240	54.30
APRIL	26870	53.10
MEI	24070	53.08

CARTA ALIR PROSES

PROCESS FLOW CHART



SHREDDER MACHINE



FIBER BUAH



FIBER TANDAN



Kawalan Pencemaran Udara

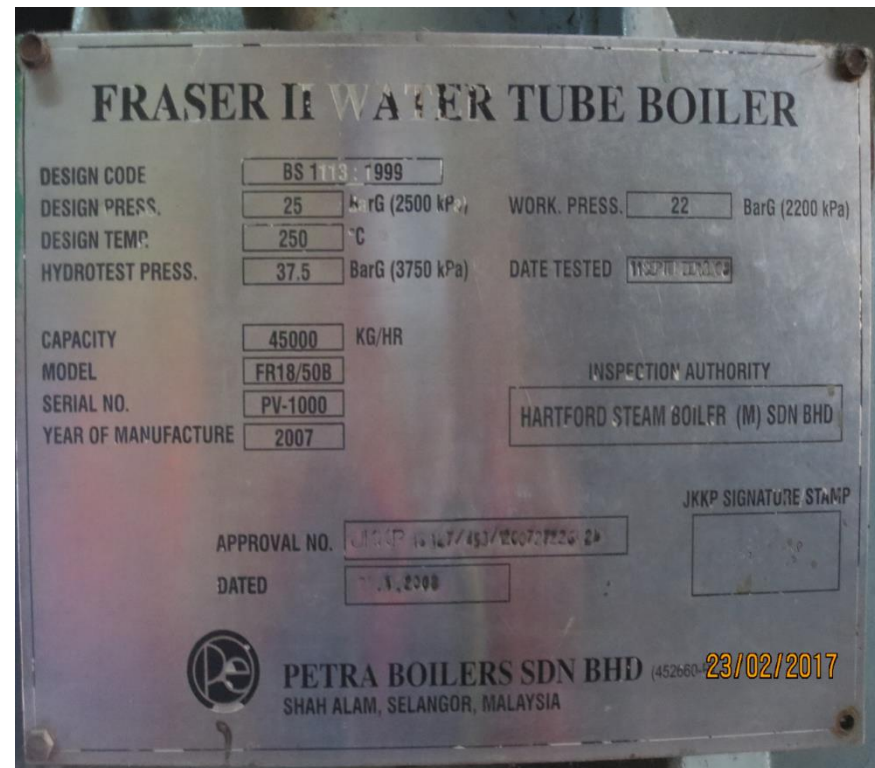
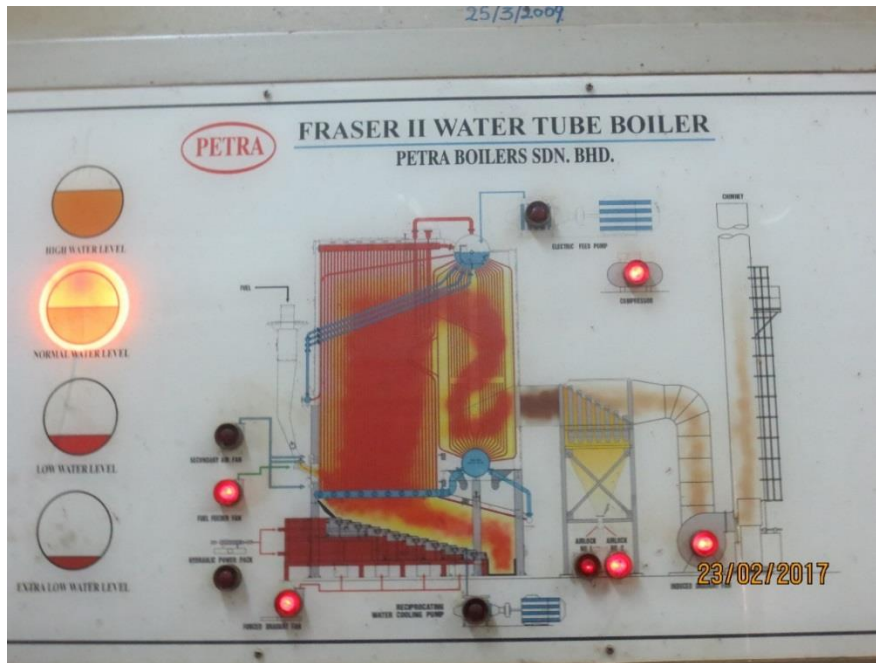
Kawalan Udara :

1.Multicyclone

2.Cems

3.Opacity Meter @ SDM

DANDANG



TRANSMISOMETER



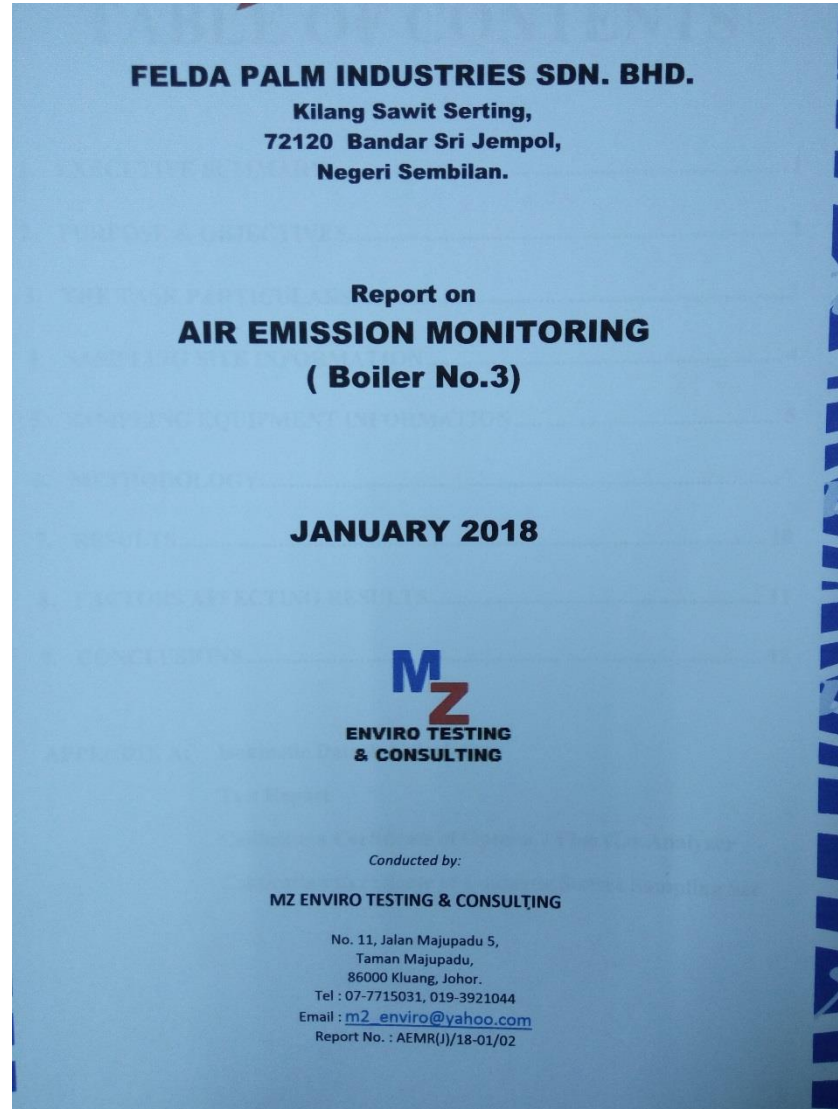
DIFFERENTIAL GAUGE



SD METER



Stack Sampling



Air Emission Monitoring Report AEMR(J)/17

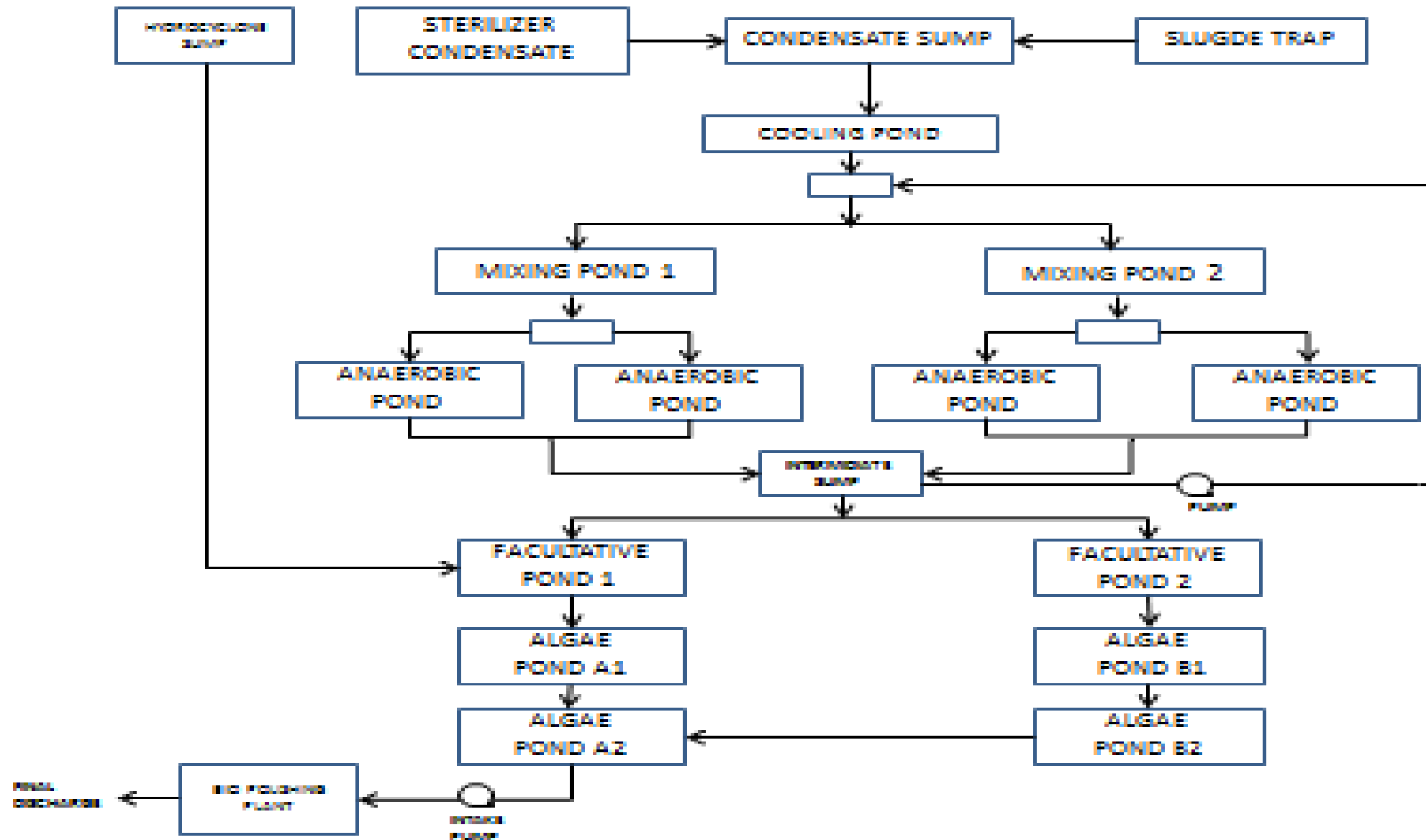
7. RESULTS

7.1 Pollutants concentration:

Facility	Parameter	Unit	Pollutant concentration	Limit value*	Remark	Particulate mass flow rate (g/h)
Boiler No. 3	Total PM	mg/Nm ³	118.95	150	Complied	1500.04
	Sum of SO ₂ & SO ₃ (as SO ₂)	mg/Nm ³	27.96	500	Complied	
	Opacity (Dark Smoke)	-	Ringelmann Chart No. 1	Ringelmann Chart No. 1	Complied	

Note 1: * The limit value belongs to Clean Air Regulation 2014, Regulation 13.
Note 2: Requirement for the opacity is referring to *limit values* stated in regulation no. 12.

CARTA ALIR LOJI RAWATAN EFFLUENT KILANG SAWIT SERTING





COOLING POND



INLET METER



FACULTATIVE 1



FACULTATIVE 2



ALGAE A1



ALGAE B1

BIO POLISHING



ALGAE A2



ALGAE B2



ALGAE A2



ALGAE A2

LOKASI PELEPASAN EFLUEN



OUTLET METER



OER SUKUTAHUN PERTAMA

Mg/Liter

Tarikh	pH (5-9)	BOD 3 (100)	SS (400)	O&G (50)	AN (150)	TN (200)
26 Jan 18	8.37	78	288	3	24	40
21 Feb 18	8.35	65	279	1	76	86
19 Mac 18	8.33	80	268	3	86	96

PENGURUSAN BT

STOR BUANGAN TERJADUAL



NO. SIRI: CePPOME/15104



INSTITUT ALAM SEKITAR MALAYSIA
JABATAN ALAM SEKITAR

Sijil Kompetensi

Dengan ini disahkan bahawa

MOHAMMAD ZUBIR BIN MOHAMAD ZAKI
841023-08-6027

telah memenuhi segala kriteria yang ditetapkan oleh

Jabatan Alam Sekitar Malaysia

sebagai

CERTIFIED ENVIRONMENTAL PROFESSIONAL IN THE TREATMENT OF
PALM OIL MILL EFFLUENT - POND PROCESSES
(CEPPOME)

DATO' DR. AHMAD KOMARULNAJUIB BIN CHE IBRAHIM
PENERUSI PANEL PERSIJILAN

DATO' HALIMAH HASSAN
KETUA PENGARAH KUALITI
ALAM SEKELILING MALAYSIA

SIJIL KOMPETEN

KRONOLOGI SIASATAN

<i>Bil</i>	<i>Tarikh</i>	<i>Hasil pemeriksaan</i>	<i>Tindakan JAS</i>	<i>Tindakan premis / status</i>
1	23 Feb 17	Patuh pada semua syarat lesen	FC	Patuh
2	17 Mei 17	Patuh pada semua syarat lesen	FC	Patuh
3	28Sept 17	Desktop EMT: 6/7	Pantau pematuhan EMT	Penuhi EMT: Env. Transparency
4	14 Nov 17	Patuh pada semua syarat lesen	FC	Patuh
5	12 Mac 18	i. Housekeeping di kawasan mekanikal tidak dijaga. ii. Kolam Anaerobik timbul solid	Notis Arahan Sek 31	Patuh NA

SYOR 10

- ▶ Lesen boleh diperbaharui