

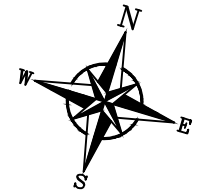
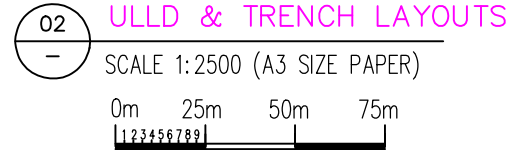
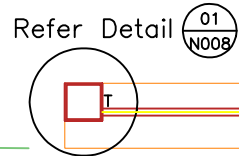
SECTION A-A

Reduced Level 1 (RL1)

Reduced Level 2 (RL2)

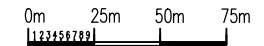
Refer to Table 1a, 1b
& 1c for RL1 and
RL2.

2m wide x 0.3m deep
trench. Total length = 986m



NOTES:

- COORDINATES AND ELEVATIONS ARE IN METRES.
- PLANT COORDINATES (PN) TO STATE COORDINATES (N) AS
PN 100.0000 REFER TO N 31855.7976
X 100.0000 REFER TO E 104277.2637
- ROTATION CLOCKWISE AROUND PN 0.0000 X 0.0000 OF
16.5722° AND DISPLACE TO N 31731.4292 E 104209.9399



SCALE 1:2500 (A3 SIZE PAPER)

Source: Lynas (2018)

Title:

Schematics of ULLD trench

Project:

Proposed Onsite Secure Landfill (Prescribed
Premise) for the Storage of NUF Solids within
the Existing LAMP Site located on PT 17212,
Gebeng Industrial Estate, Kuantan, Pahang

Project Proponent:

Lynas Malaysia Sdn. Bhd.

Consultant:



Job No.:

AGV-MY-R37-0145

Date:

February 2019

Dwg Size:

A4

Scale:

As Shown

Dwg No.:

Figure 5.10a

Table 1a

LOCATION	RL1 (m)	RL2 (m)
A	8.000	7.700
B	8.000	7.700
C	7.750	7.450
D	7.315	7.015
E	7.295	6.995
F	7.438	7.138

Table 1b

LOCATION	RL1 (m)	RL2 (m)
G	7.275	6.975
H	7.418	7.118
J	7.255	6.955
K	7.398	7.098
L	7.235	6.935
M	7.378	7.078

Table 1c

LOCATION	RL1 (m)	RL2 (m)
N	7.215	6.915
P	7.358	7.038
R	7.258	6.958
S	7.158	6.858
T	6.786	6.486