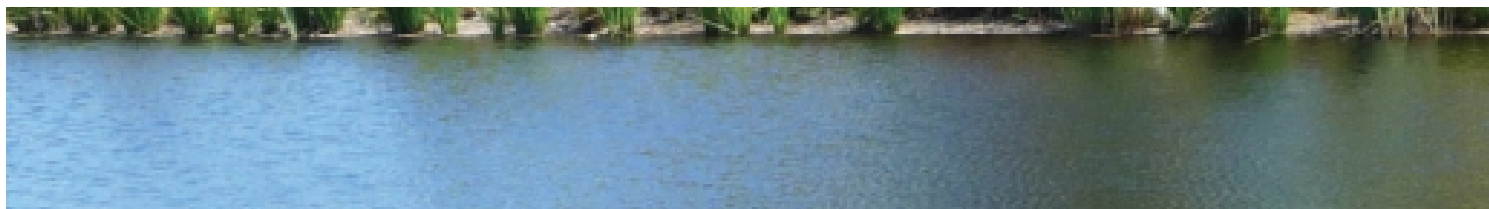


Water Quality Pollution **ISSUES**



INDUSTRIES

- WWTP not functioning due to lack of capital
- Illegal industries encroaching river

SEWAGE TREATMENT PLANT

- The risk of compromised quality
 - constructed by the private developers but operated and maintained by the public operators



SOLID WASTE

- Leachate seepage
- Illegal dumpsite
- Disposal into rivers

RESTAURANTS AND FOOD COURTS

- No oil and grease traps
- Poor maintenance
- Sullage is discharged into back drains

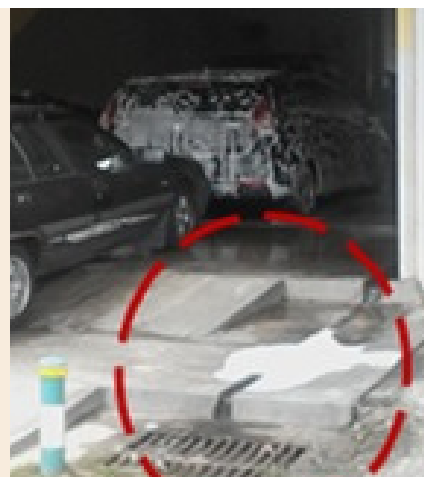


WET MARKETS

- Waste water is discharged into drains without treatment
 - Eventually flow into rivers
 - eg. chicken slaughtering activity

CAR WASH AND LAUNDRY SHOPS

- Direct discharge into drains
 - High usage of detergent consists of phosphate





FISH AND AQUACULTURE PONDS

- Without treatment
- Discharge of saltwater

LIVESTOCK FARMS

- Without treatment



SURFACE RUN-OFF

- Land clearance for development
- Encroachment of agricultural land
- Poor implementation of erosion and sedimentation control

URBANISATION

- No erosion and sedimentation control measures
- Difficulty in enforcement and monitoring in controlling of land clearing and earthworks activities



INDUSTRIALISATION

- Accidental spills and discharge of potentially toxic compounds
 - Encroachment of illegal industries
 - Surface run-off

OTHER ISSUE

- Unsealed roads with exposed slopes



OTHER ISSUE

- Overgrazing near river bank

