

INTRODUCTION

Logging activity is defined as the process of cutting and moving wood from the stump to somewhere outside the forest usually a lumber yard or sawmill. It involves cutting, skidding, on-site processing and loading of trees or logs onto trucks and transportation to the log yard. It also involves the logistics of moving timber from log yard to a saw mill. The logging activity is a process to provide adequate timber supply for Malaysian timber industries as well as to make way for new development activities.

EXECUTIVE SUMMARY

PROJECT PROPONENT
SERUAN GEMILANG MAKMUR SDN BHD
No.10, Tingkat 1,
Lorong Tun Ismail 1,
25200 Kuantan,
Pahang Darul Makmur

ENVIRONMENTAL CONSULTANT
ECO SYNERGY SOLUTIONS SDN BHD
NO. 2-22, KOMPLEK SENTRAL POINT, JALAN TKS 1,
TAMAN KAJANG SENTRAL,
43000 KAJANG,
SELANGOR DARUL EHSAN

STATEMENT OF NEED

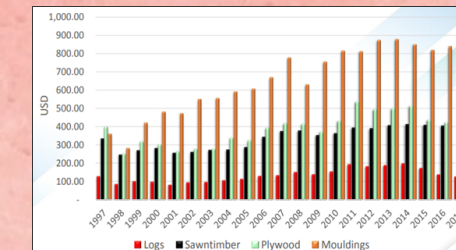
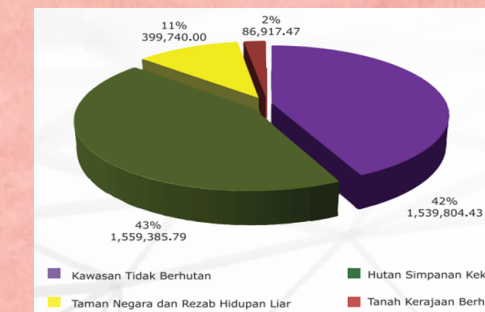


Figure1: Exports & Imports of Major Timber and Timber Products (1997-2017)



The Status of Forest Resources in Pahang

National Timber Industry Policy (NATIP 2009-2020)

- The timber industry has been one of the main contributors to the growth of Malaysia's economy.
- Malaysia is one of the world's largest exporters of tropical timber and timber products and the ten largest exporters of furniture (second in Asia) with over 183 export destinations.
- It is estimated that at least 60 % of export earnings must be derived from downstream products and the balance 40 % from primary processed products.
- To ensure the continuity of the wood-based industry in Malaysia.



Job Opportunity

To provide job opportunities among the communities

PROJECT LOCATION

NEAREST TOWN

Muadzam Shah Town (±30.5 km)

ACCESS ROAD (2 existing road will be used)

1- Using Jalan Muadzam - Bukit Ibam until Jalan TM Bukit Sembilan (±21.95km), from there, the unpaved access road to the project site is about ±9 km

2- Using Jalan Ibam - TUDM to Jalan Chini (±5.6km), from there, the unpaved access road to the project site is about ±10.21 km

SENSITIVE RECEPTORS

- Impact to Settlements
- Impact to Sharing Road
- Impact to Wildlife
- Impact to Water Intake

EXISTING ENVIRONMENT (WITHIN 5 KM RADIUS)

- Forest (Bukit Ibam Forest Reserve)
- Agriculture: Amanah Saham Pahang Berhad (ASPA)
- Land Use: Nearest Settlements (Kg Orang Asli Ganoh, Kg Orang Asli Batu Hitam, Kg Bukit Ibam, Kg Orang Asli Banai & RPS Buluh Nipis)
- Water body - tributaries of Sungai Peruk, Sungai Cipai, Sungai Magu, Sungai Semumuh, Sungai Tepesuk, tributaries of Sungai Jeram and Sungai Jeram

Average Annual Rainfall : 2350.5 mm

Average Annual Temperature
Highest: 27.7 °C
Lowest: 26.4 °C

METEOROLOGY

Elevation : 33.3 m

Average Annual Relative Humidity
Maximum: 86.4%
Minimum: 80.7%

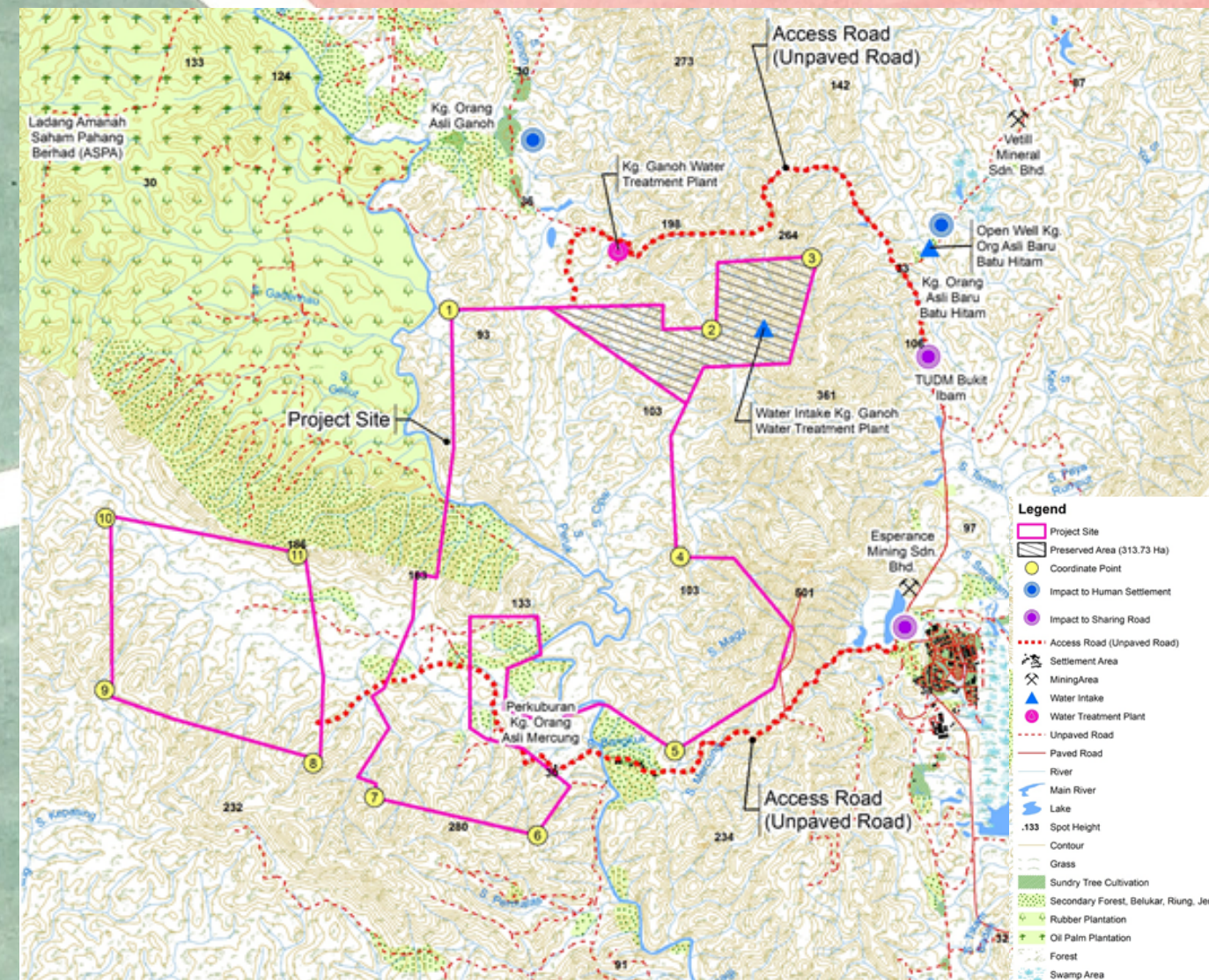
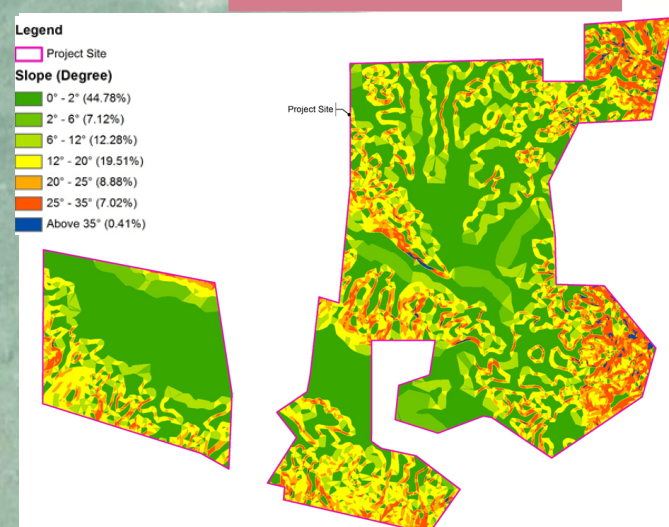
WATER QUALITY

There are twenty-eight (28) water quality stations.

Based on the calculation of the Water Quality Index (WQI), sampling on July 2019 recorded WQI between 70.10 to 88.02

Based on the calculation of the Water Quality Index (WQI), sampling on Dec/Jan 2020 recorded WQI between 71.42 to 78.61

SLOPE ANALYSIS



FLORA STUDY

Ten dominant family at the project site

FAMILY	No of Genus	No of Species
Rubiaceae	16	21
Leguminosae	14	21
Annonaceae	10	19
Dipterocarpaceae	4	18
Euphorbiaceae	6	17
Clusiaceae	4	15
Malvaceae	10	14
Anacardiaceae	9	14
Burseraceae	4	14
Phyllanthaceae	6	10

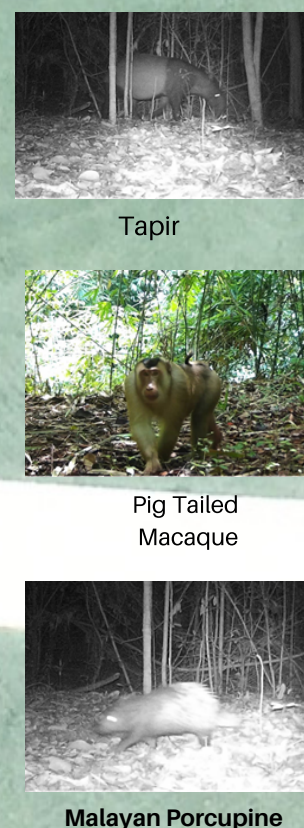
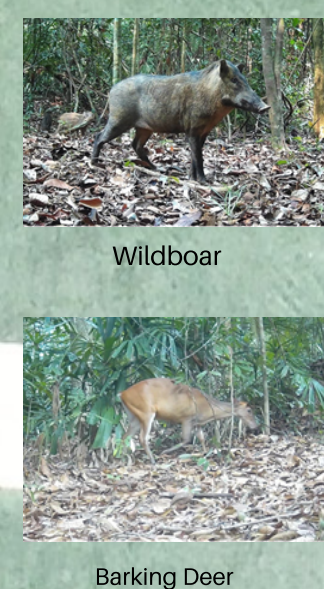
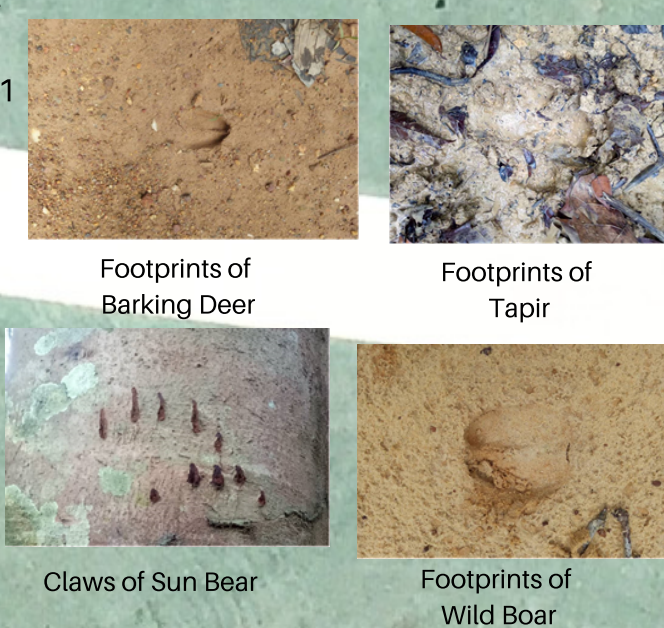
PLANT SPECIES WITHIN PROJECT SITE



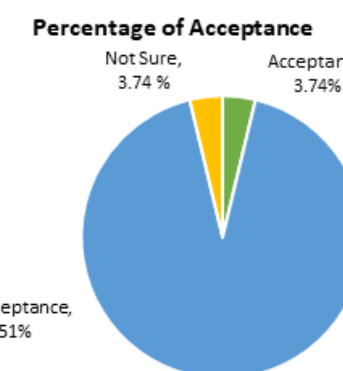
FAUNA STUDY

- Mammals : 13 species
- Avian : 36 species
- Herpetofauna : 11 species

WILDLIFE FOUND ON CAMERA TRAP



SOCIO ECONOMY STUDY



PERFORMANCE MONITORING (PM)

LD-P2M2 Tools	Performance Monitoring (PM) Parameters	Recommend ed Limits	Monitoring Locations	Frequencies
Sediment Trap/Basin	Silt Marker	2/3 depth from sediment trap	Refer LD-P2M2 Conceptual Plan (Attachment 1)	Weekly or after rain event (in-situ)
Perimeter Drain	Performance			Quarterly
River Buffer				
Cover Crop				
Earth Drain with Check Dam	Sediment Level			
Temporary or permanent waterway crossing (culvert/bridge)	Structure and Performance			

IMPACT MONITORING (IM)

Component	Regulated Parameters	Monitoring Locations	Frequencies
*Air Quality	PM ₁₀ PM _{2.5}	Refer Figure 6.3.19 in Chapter 6 (m/s 6-46)	Quarterly
**Noise	L _{avg} L _{max} L _{min}	Refer Figure 6.3.19 in Chapter 6 (m/s 6-46)	Quarterly
***Water Quality	Total Suspended Solids (TSS) Biochemical Oxygen Demand (BOD) pH Turbidity (NTU) Ammoniacal Nitrogen (NH ₃ -N) Dissolved Oxygen (DO) Chemical Oxygen Demand (COD) Oil & Grease E. Coli	Refer Figure 6.3.19 in Chapter 6 (m/s 6-46)	Monthly

PROJECT DESCRIPTION

Seruan Gemilang have consent on this land which cover an area of 3844.60 Ha as per approved by Mahkamah Tinggi Malaya.

This project site will undergo logging activity which will it has been allowed to use clear-felling method as per approval by Department of Forestry Pahang (DOF)

PROJECT ACTIVITIES (LOGGING ACTIVITY)

PRE-ACTIVITY (Preliminary Investigation)	LOGGING ACTIVITY	POST-LOGGING ACTIVITY
Site Survey	Construction of Internal Access Road, Feeder Road, Skid Road and Drainage System	Demolition of Base Camp and Log Yard
Soil Survey	Installation of LD-P2M2 tools	Removal of All Machinery, Vehicles, Waste from Concessions
Flora Fauna Survey	Base Camp Establishment	Rehabilitation of Log Yard, Skid Trail and Access Road
Socio Economy Survey	Log Yard (Mataui)	Cover Crop
Identify Forest Type	Timber Felling (Bucking, skidding, log loading, waste disposal)	Post-Closure Environmental Monitoring and Audit
Identifying Access Road	Documentation / Log of Works	
Project Planning / Management	Transportation	

COMPLIANCE MONITORING (CM)

Component	Regulated Parameters	Applicable Standards	Monitoring Locations	Frequencies
**Noise	L _{avg}	Day: 55 dBA Night: 50 dBA	Refer Figure 6.3.19 in Chapter 6 (m/s 6-46)	Quarterly
***Water Quality (Discharged from Sediment Basin)	Total Suspended Solids (TSS) Turbidity	50 mg/L 250 NTU	Refer Figure 6.3.19 in Chapter 6 and LD-P2M2 Conceptual Plan (Attachment 1)	After 12.5 mm rainfall (using rain gauge)